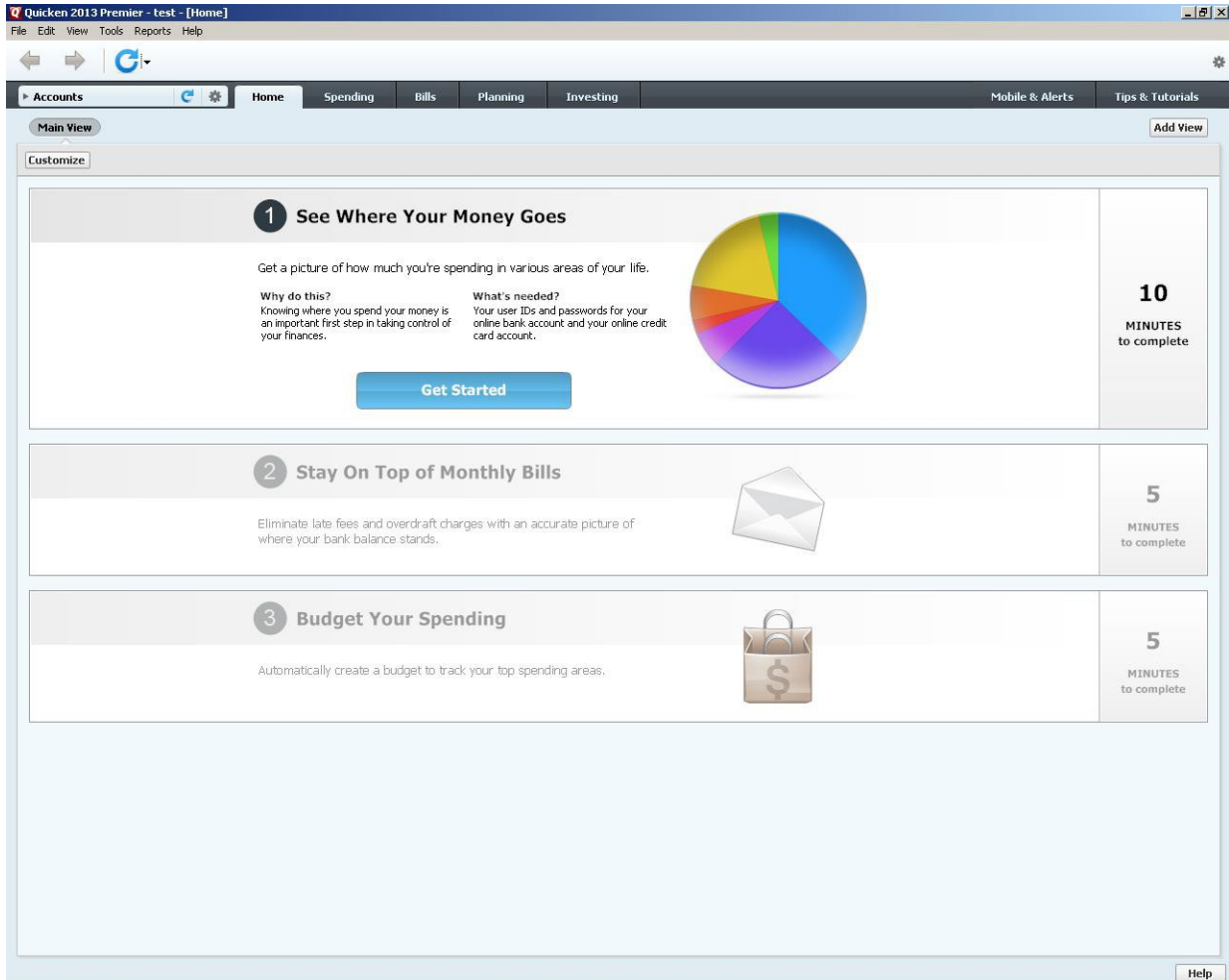
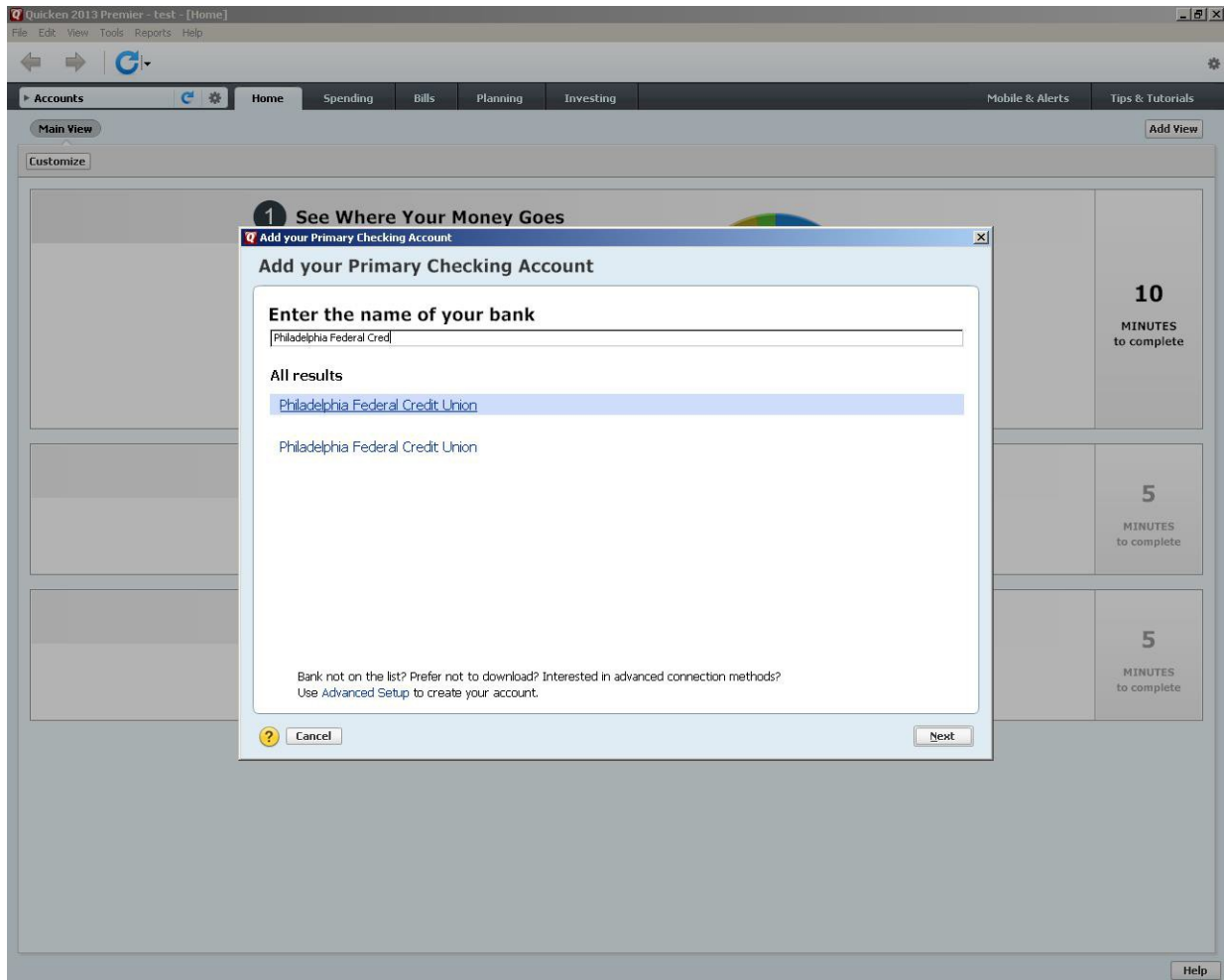


1. Click on the Get Started button (or Add a New Account).

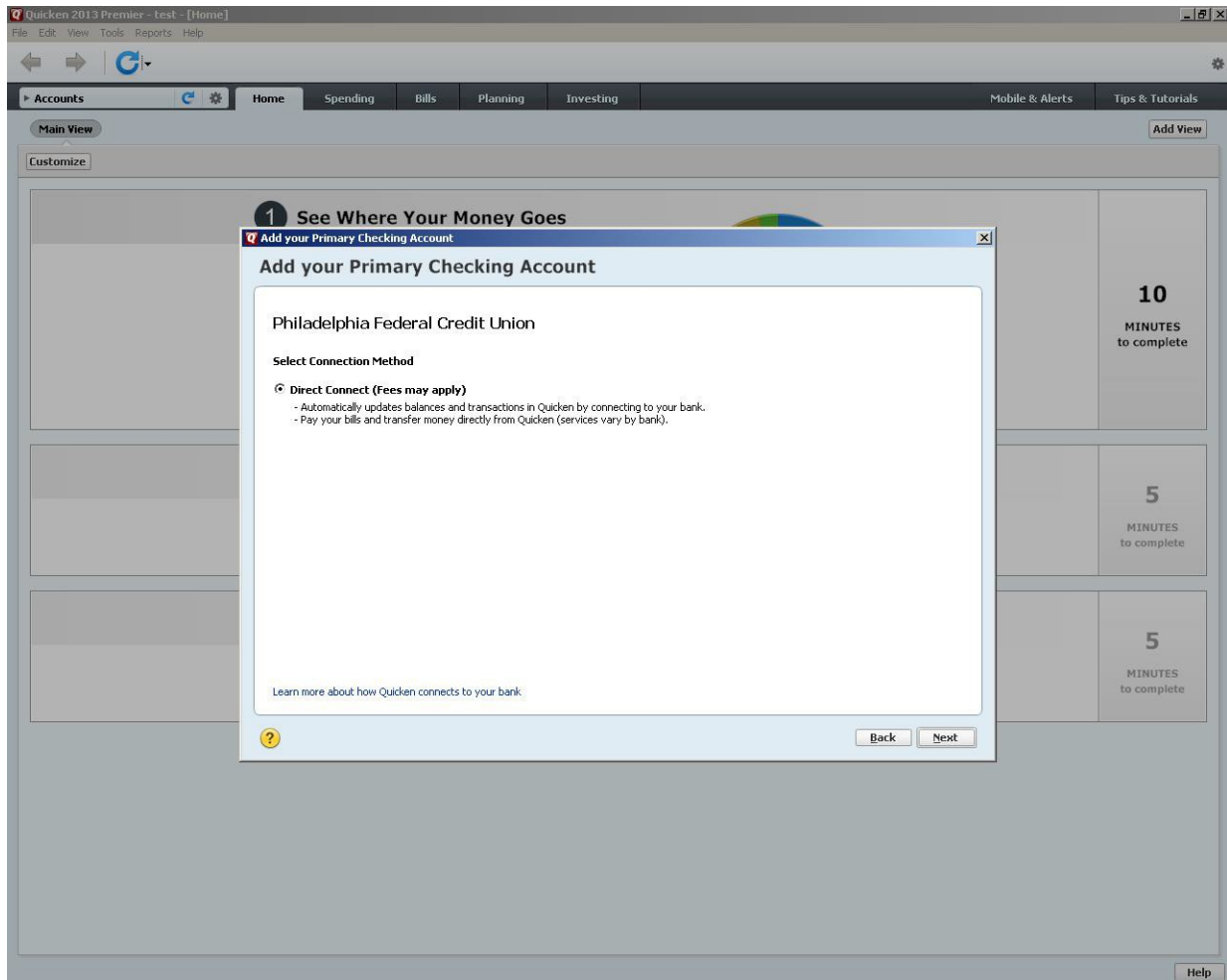
If you already have a PFCU account setup in Quicken, please see the instructions for setting up **How to Setup Direct Connect for Quicken - Existing Account**.



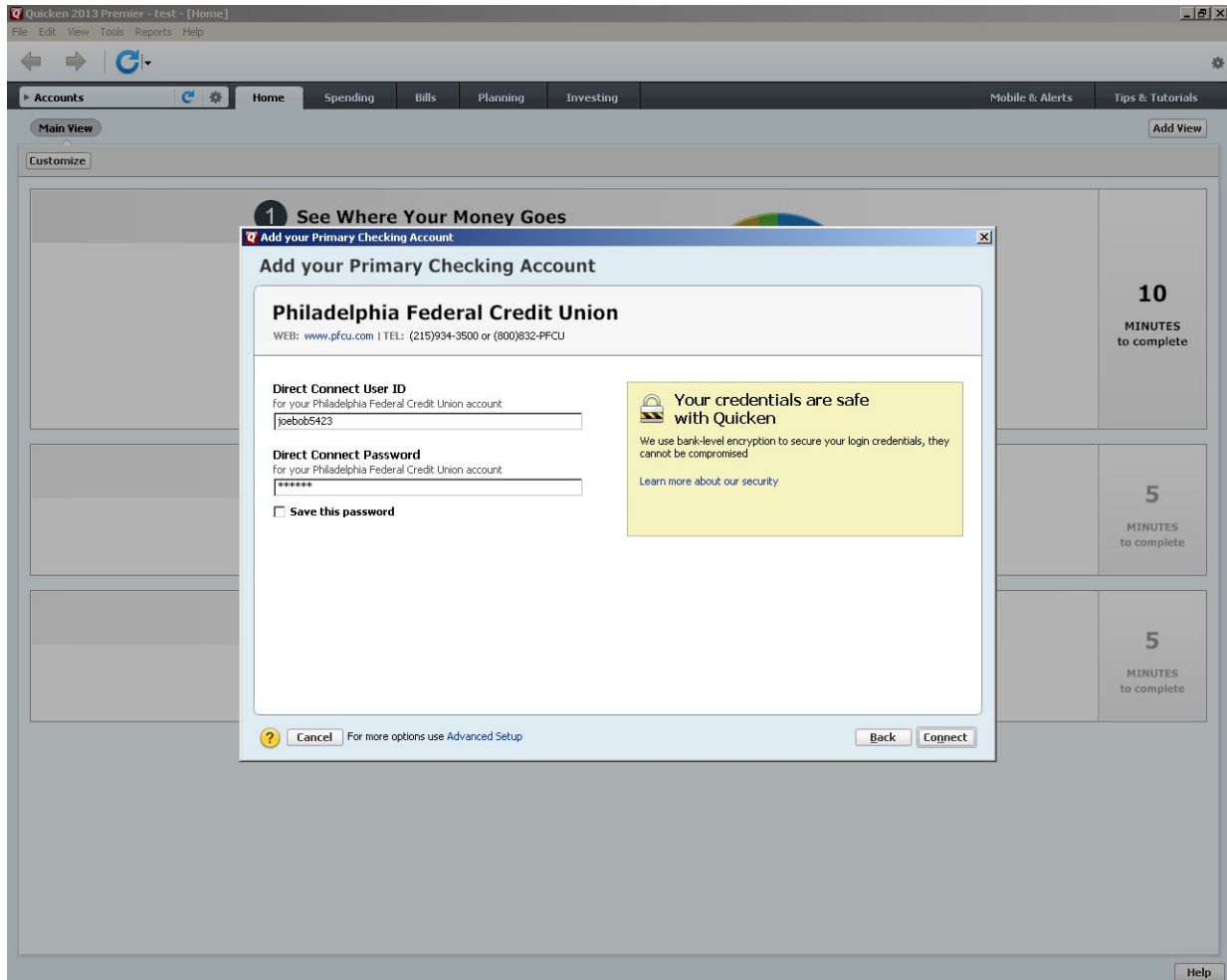
2. Type in the Name of The Credit Union and select **Philadelphia Federal Credit Union** and click on the “Next” Button.



3. Select the **Direct Connect** Method and click the “Next” button.



4. Enter in your Teller Net Member ID (*Not Account Number*) and the password you just created during the Direct Connect Enrollment Process and click on the “connect” button.



5. Quicken will connect to the servers and pull down your account information into Quicken.

