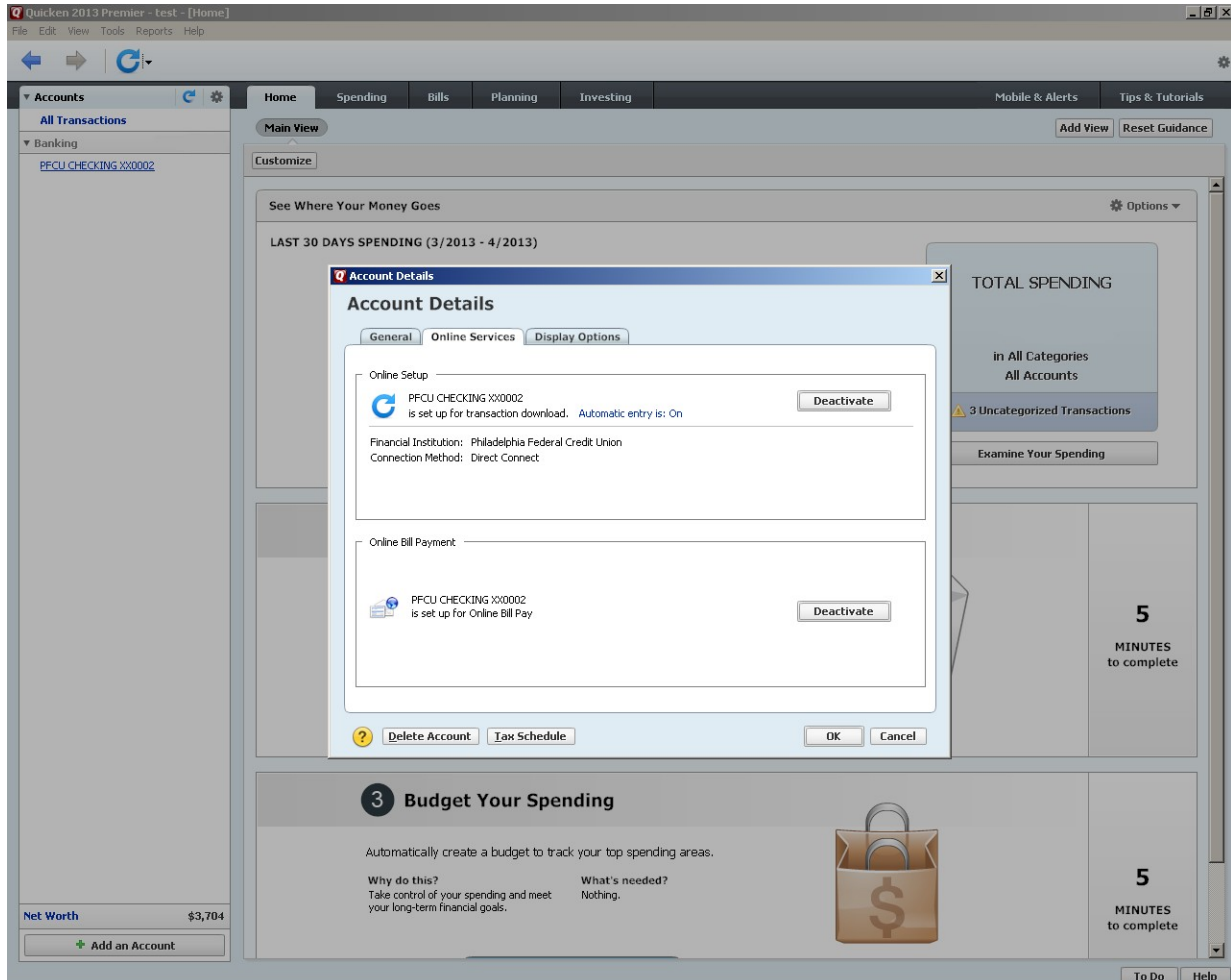
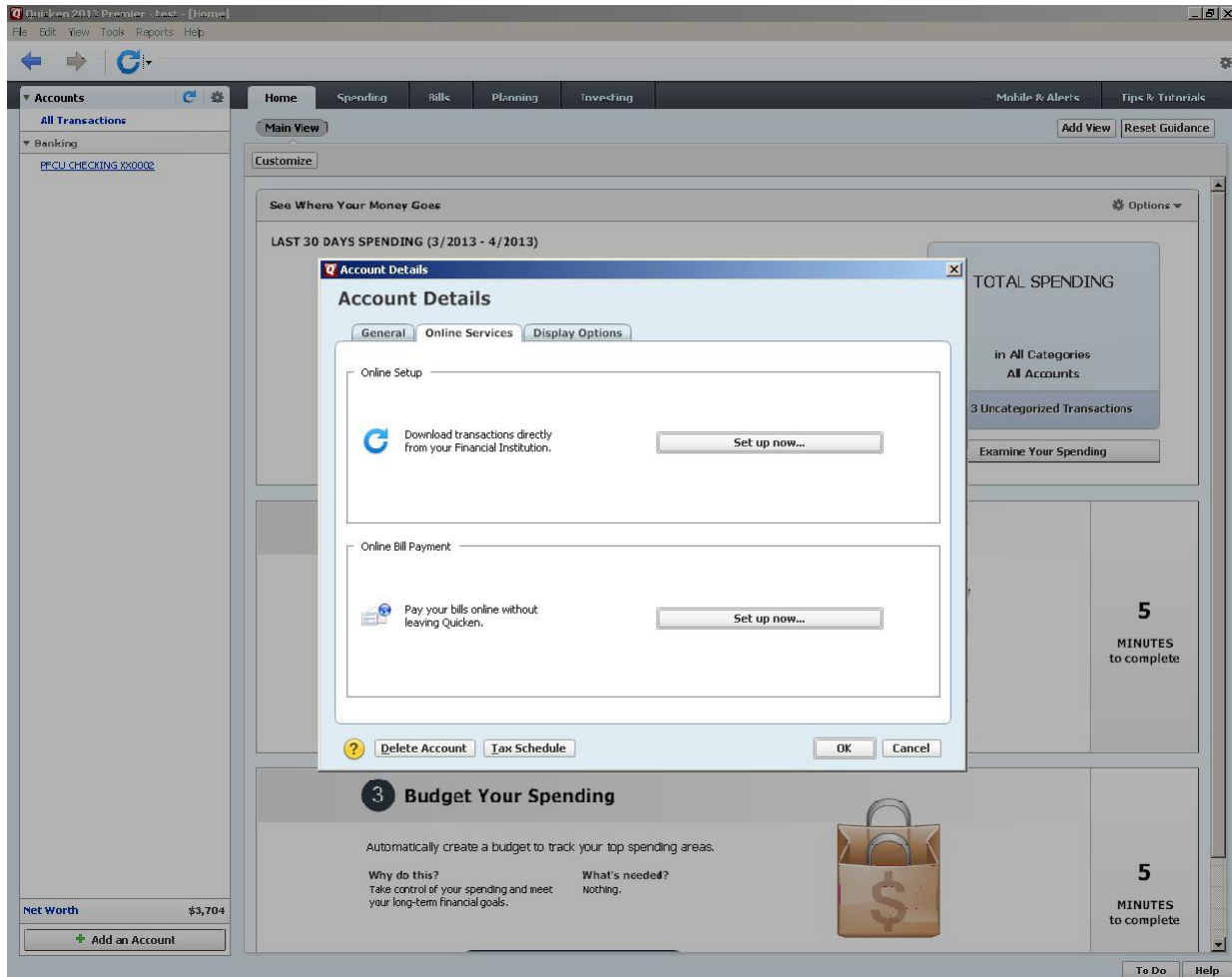


1. If you already have accounts setup and you would like to start to use the Direct-Connect Service. You must first Deactivate your current Online Services.

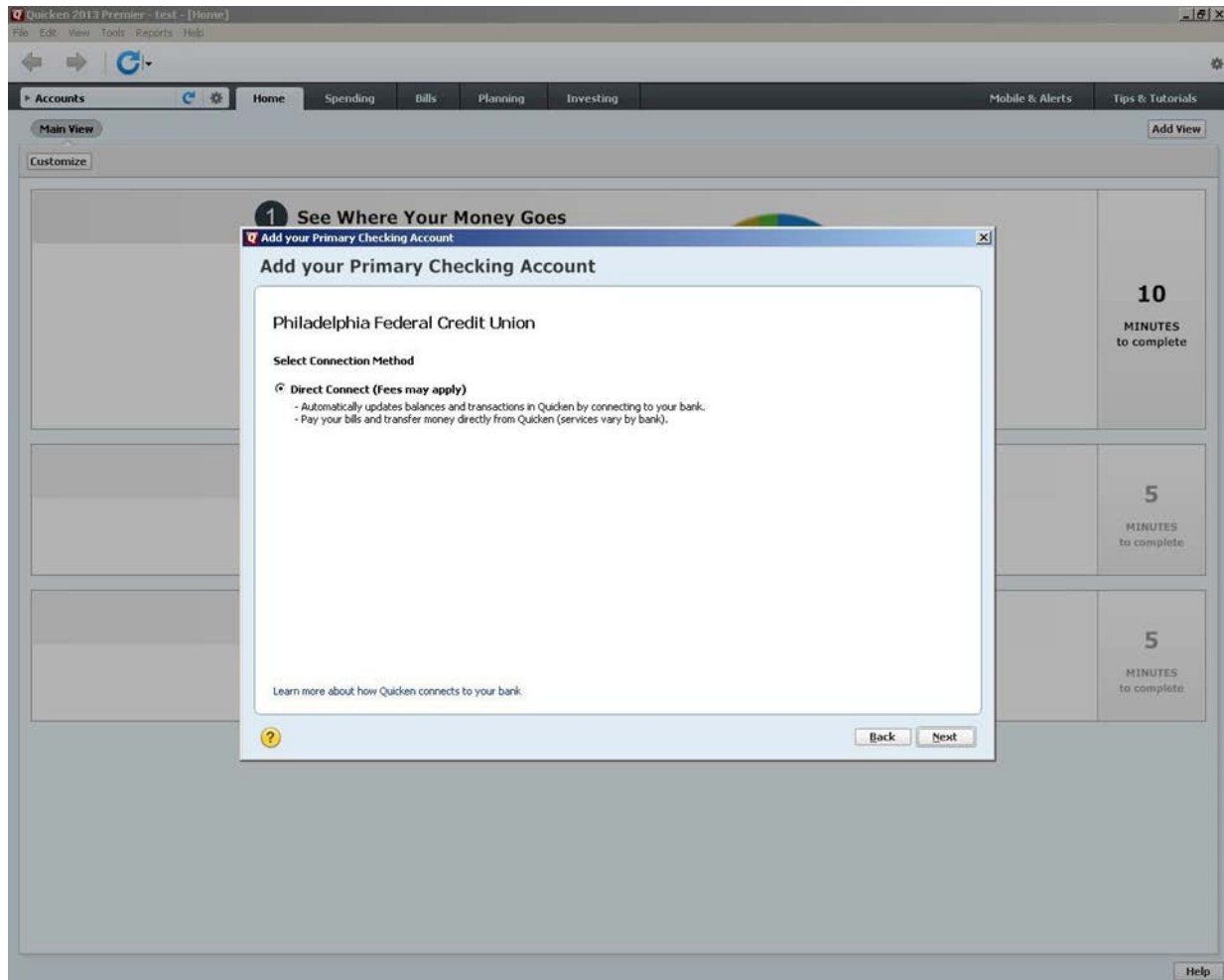
To do this right click on your existing Account and select "Edit" which will pop-up, the Account Details Window, Click on the "Online Services" Tab and then Click the "Deactivate" button.



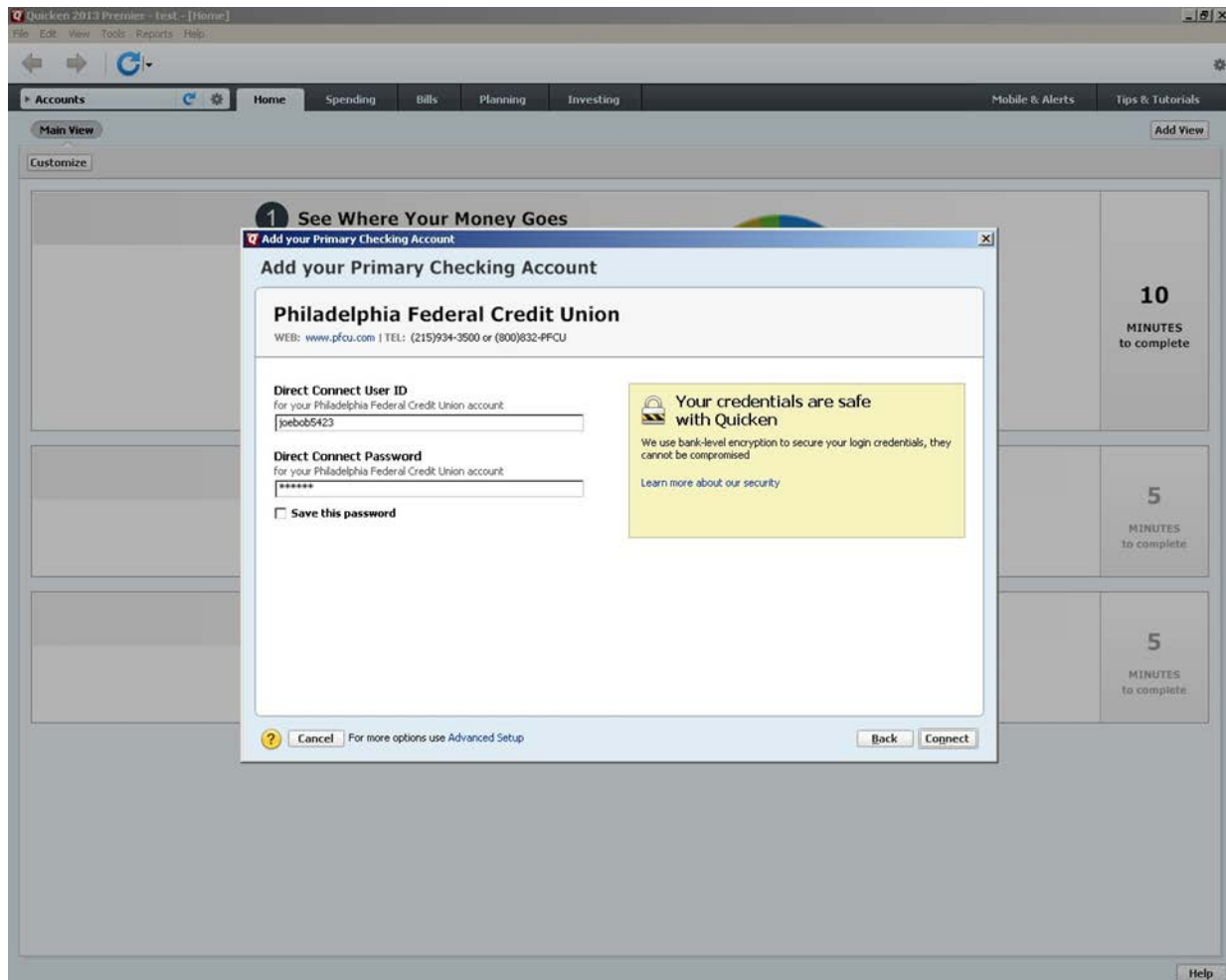
2. After you deactivate the Online Services – you can start to setup Direct Connect. Click on the “Set up now...” Button.



3. Select the **Direct Connect** Method and click the “Next” button.



4. Enter in your Teller Net User ID (*Not Account Number*) and the password you created in the registration process. Click on the “Connect” button



5. Quicken will connect to the servers and pull down your account information into quicken.

